

# About Your Neptune Water Meter



Flip open lid to expose face of meter.

## INTRODUCTION

◇ Your new Neptune meter is a radio frequency unit that collects meter-usage data and transmits the data for collection.

◇ This data is transmitted to a Neptune mobile handheld device used by our meter readers.

## FEATURES

◇ The usage data logging capability provides up to the hour consumption data that is recorded as it happens, every hour on the hour.

◇ The leak indicator checks usage every 15 minutes in a 24 hour period.

◇ This information can be computed into a graphic chart (if necessary) to show daily or hourly consumption.

◇ The chart helps identify problems such as a possible leak.

## LIGHT SENSOR

- ◇ Recessed small hole (next to the word NEPTUNE).
- ◇ Supplies the power for the LCD panel (light activated)

On your LCD screen you may see the following icons:



## LEAK INDICATOR

◇ Displays a possible leak

**OFF** No leak indicated

## Flashing

Intermittent leak indicates that water has been used for at least 15 minute intervals during a 24 hour period

## On Continuously

Indicates water use for all 96 15 minute intervals during a 24 hour period



## FLOW INDICATOR

◇ Shows the direction of flow through the meter.

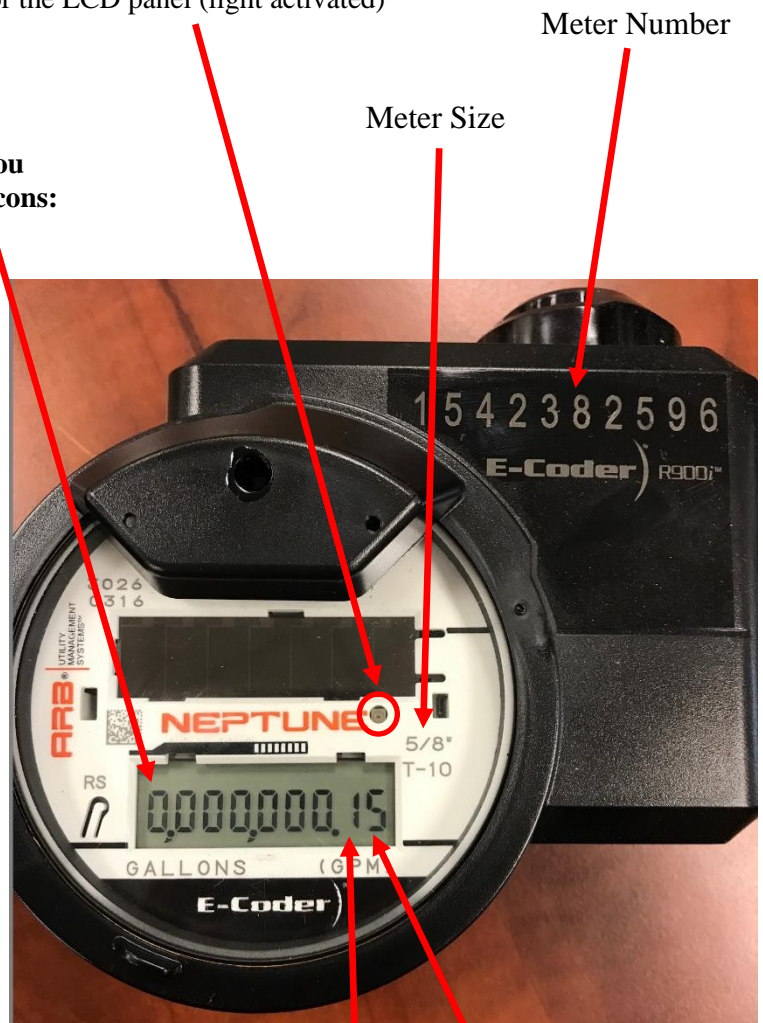
**ON** Water in use

**OFF** Water not in use

**Flashing** Water is running slowly

(-) Reverse flow

(+) Forward flow



## LCD Display

◇ Nine digit LCD displays the meter reading in billing units of gallons

The reading is followed by two decimal points

◇ The first decimal point is a tenth of a gallon

◇ The second decimal point is a hundredth of a gallon

## How to read your meter

◇ The reading in the photo is 0.15 gallons

## RATE

### RATE OF FLOW

◇ Average flow rate is displayed every 6 seconds on LCD display.

◇ This indicates how many gallons per minute are going through your meter

# About Your Neptune Water Meter



Flip open lid to expose face of meter.

## INTRODUCTION

◇ Your new Neptune meter is a radio frequency unit that collects meter-usage data and transmits the data for collection.

◇ This data is transmitted to a Neptune mobile handheld device used by our meter readers.

## FEATURES

◇ The usage data logging capability provides up to the hour consumption data that is recorded as it happens, every hour on the hour.

◇ The leak indicator checks usage every 15 minutes in a 24 hour period.

◇ This information can be computed into a graphic chart (if necessary) to show daily or hourly consumption.

◇ The chart helps identify problems such as a possible leak.

## LIGHT SENSOR

- ◇ Recessed small hole (next to the flashlight).
- ◇ Supplies the power for the LCD panel (light activated)

On your LCD screen you may see the following icons:



## LEAK INDICATOR

◇ Displays a possible leak

**OFF** No leak indicated

**Flashing**  
Intermittent leak indicates that water has been used for at least 15 minute intervals during a 24 hour period

**On Continuously**  
Indicates water use for all 96 15 minute intervals during a 24 hour period



## FLOW INDICATOR

◇ Shows the direction of flow through the meter.

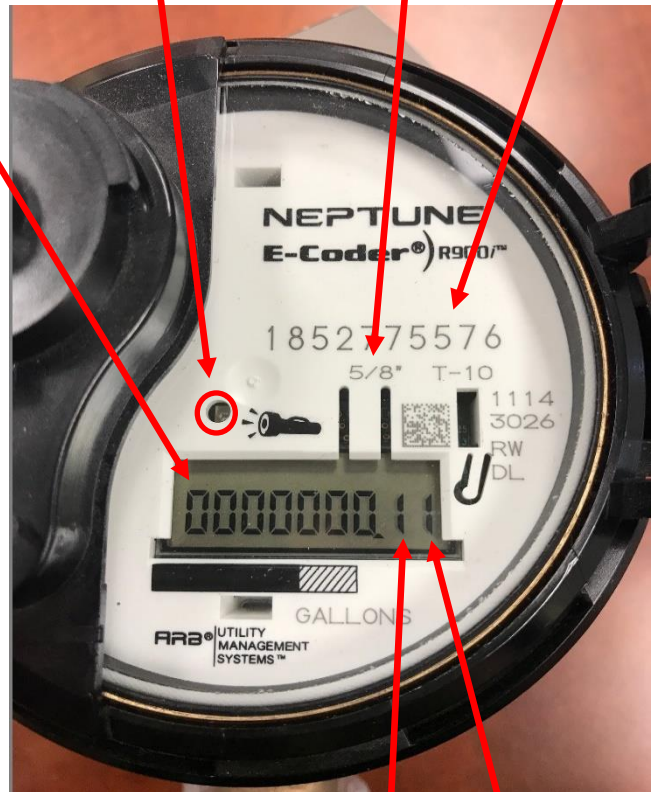
**ON** Water in use

**OFF** Water not in use

**Flashing** Water is running slowly

(-) Reverse flow

(+) Forward flow



Meter Number

Meter Size



## LCD Display

◇ Nine digit LCD displays the meter reading in billing units of gallons

The reading is followed by two decimal points

- ◇ The first decimal point is a tenth of a gallon
- ◇ The second decimal point is a hundredth of a gallon

## How to read your meter

◇ The reading in the photo is 0.11 gallons

## RATE

### RATE OF FLOW

◇ Average flow rate is displayed every 6 seconds on LCD display.

◇ This indicates how many gallons per minute are going through your meter